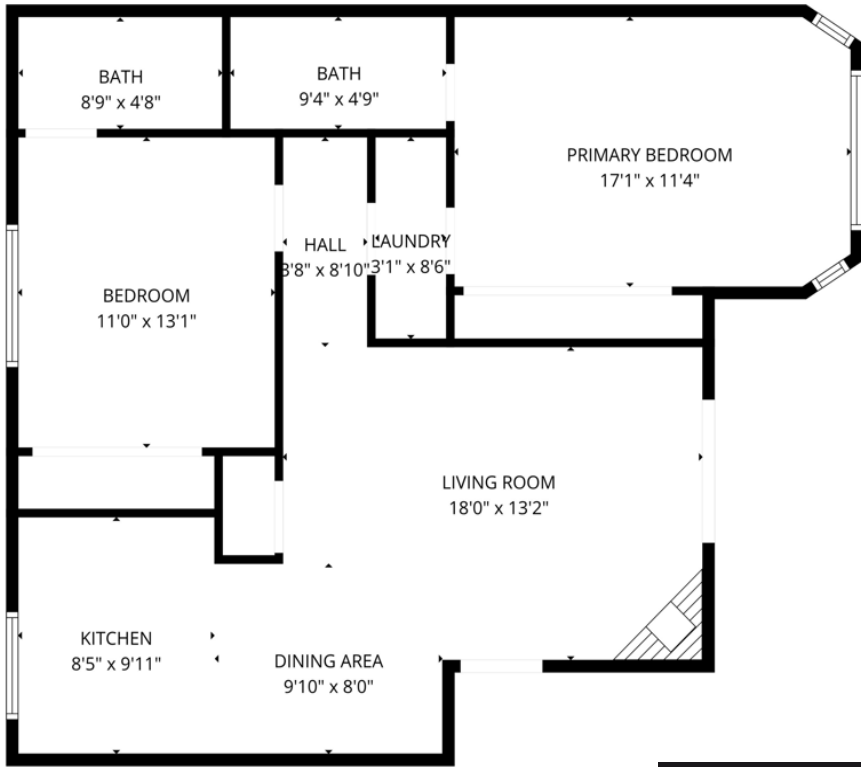


# 10220 DE SOTO AVENUE 11, CHATSWORTH, CA, US, 91311

<https://realtorjd.com>

10220 De Soto Avenue 11, Chatsworth, CA, US, 91311



**\$515,000**

CSMAR MLS

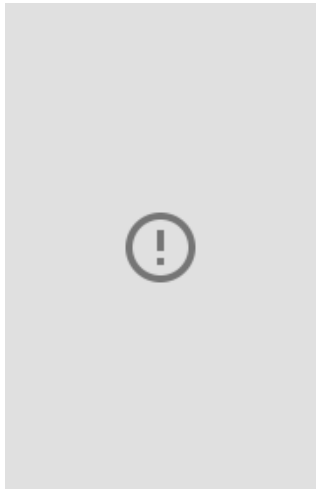
FLOOR PLAN CREATED BY CUBICASA APP. MEASUREMENTS DEEMED HIGHLY RELIABLE BUT NOT GUARANTEED.

5.875% VA Assumable Loan Opportunity for Military Buyers! Welcome to this beautifully updated 2-bedroom, 2-full bathroom condo offering 926 sqft [...]



The ONE Luxury Properties

- 2 beds
- 2 baths
- Condominium
- Residential
- Active
- 926 sq ft



---

## Basics

**Category:** Residential

**Status:** Active

**Bathrooms:** 2 baths

**Lot size:** 65332, 65332 sq ft

**Property Condition:** UpdatedRemodeled

**County:** Los Angeles

**Type:** Condominium

**Bedrooms:** 2 beds

**Area:** 926 sq ft

**Year built:** 1986

**Zoning:** LARD1.5

---

## Building Details

**Water Source:** Public

**Sewer:** PublicSewer

**Levels:** One

**Lot Features:** SprinklersNone

**Garage Spaces:** 2

**Floor covering:** Laminate

---

## Amenities & Features

**Pool Features:** Association, Fenced, InGround

**Patio & Porch Features:** Open,Patio

**Accessibility Features:** None

**Association Amenities:** CallForRules,MaintenanceGrounds,Barbecue

**Door Features:** SlidingDoors

**Heating:** ForcedAir,NaturalGas

**Laundry Features:** Inside

**Parking Features:** Garage, Tandem

**Spa Features:** Association,Heated,InGround

**Parking Total:** 2

**Cooling:** CentralAir

**Fireplace Features:** Gas, LivingRoom

**Interior Features:** BreakfastBar

**Appliances:** Dishwasher,GasCooking,Disposal,Refrigerator

---

## Expenses, Fees & Taxes

**Association Fee:** \$550



---

## Agent info

**Agent name:** Jennifer Lindsey

**Agent MLS:** VCR-C159099082

**Agent officephone:** (805) 418-6330

---

## Miscellaneous

**Association Fee Frequency:** Monthly

**List Office Name:** The  
ONE Luxury Properties

**Listing Terms:** Cash,Conventional,FannieMae,FreddieMac,VaLoan **Inclusions:** W/D, fridge

