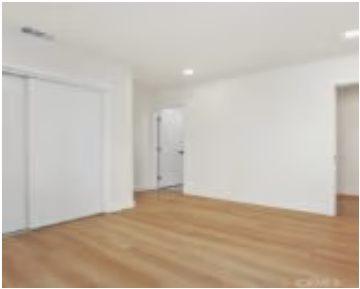


10232 S 2ND, INGLEWOOD, CA, US, 90303

<https://realtorjd.com>

10232 S 2nd,
Inglewood, CA, US,
90303



\$1,155,000

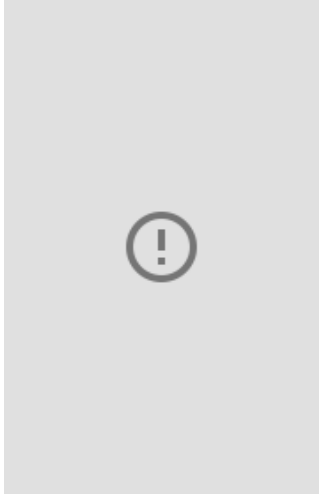
CRMLS

Welcome to 10232 S 2nd Ave, a reimagined Inglewood gem where Mediterranean charm meets modern living. This light-filled home features [...]



Redfin Corporation

- 3 beds
- 3 baths
- SingleFamilyResidence
- Residential
- Active
- 2000 sq ft



Basics

Category: Residential

Status: Active

Bathrooms: 3 baths

Lot size: 5504, 5504 sq ft

View: Neighborhood

Type: SingleFamilyResidence

Bedrooms: 3 beds

Area: 2000 sq ft

Year built: 1946

County: Los Angeles

Building Details

Structure Type: House

Lot Features: BackYard,FrontYard,Lawn,Landscaped

Common Walls: TwoCommonWallsOrMore

Fencing: Brick,GoodCondition

Levels: One

Water Source: Public

Sewer: PublicSewer

Construction Materials:
CopperPlumbing

Garage Spaces: 2

Floor covering: Laminate, Tile

Amenities & Features

Pool Features: None

Spa Features: None

Roof: Shingle

Fireplace Features: LivingRoom

Interior Features: InLawFloorplan, Pantry, RecessedLighting, Storage, SolidSurfaceCounters, Unfurnished, AllBedroomsDown, WalkInClosets

Appliances:

Dishwasher,ElectricRange,Disposal,GasRange,Refrigerator,RangeHood,WaterHeater

Parking Features: Driveway, Garage, GarageDoorOpener, Oversized, GarageFacesRear

Parking Total: 2

Cooling: CentralAir,AtticFan

Heating: Central

Laundry Features:

ElectricDryerHookup,GasDryerHookup,Inside

Nearby Schools

High School District: Inglewood Unified



Agent info

Agent name: Robert Taylor

Agent MLS: SBTAYLROB

Agent email: realtor.robert.taylor@gmail.com **Agent officephone:** 310-409-2885

Agent direct phone: 310-720-1703

Miscellaneous

List Office Name: Redfin Corporation

Listing Terms: Cash,CashToNewLoan,Conventional,FHA,Submit

Common Interest: None

Community Features: Biking,StreetLights,Suburban,Sidewalks

Inclusions: Refrigerator, Stove, Storage Shelves, Lighting Fixtures, Garage Door Opener

Virtual Tour URL Branded:
<https://www.youtube.com/watch?v=G2GCGuqW9wY>

Attribution Contact:
310-720-1703

