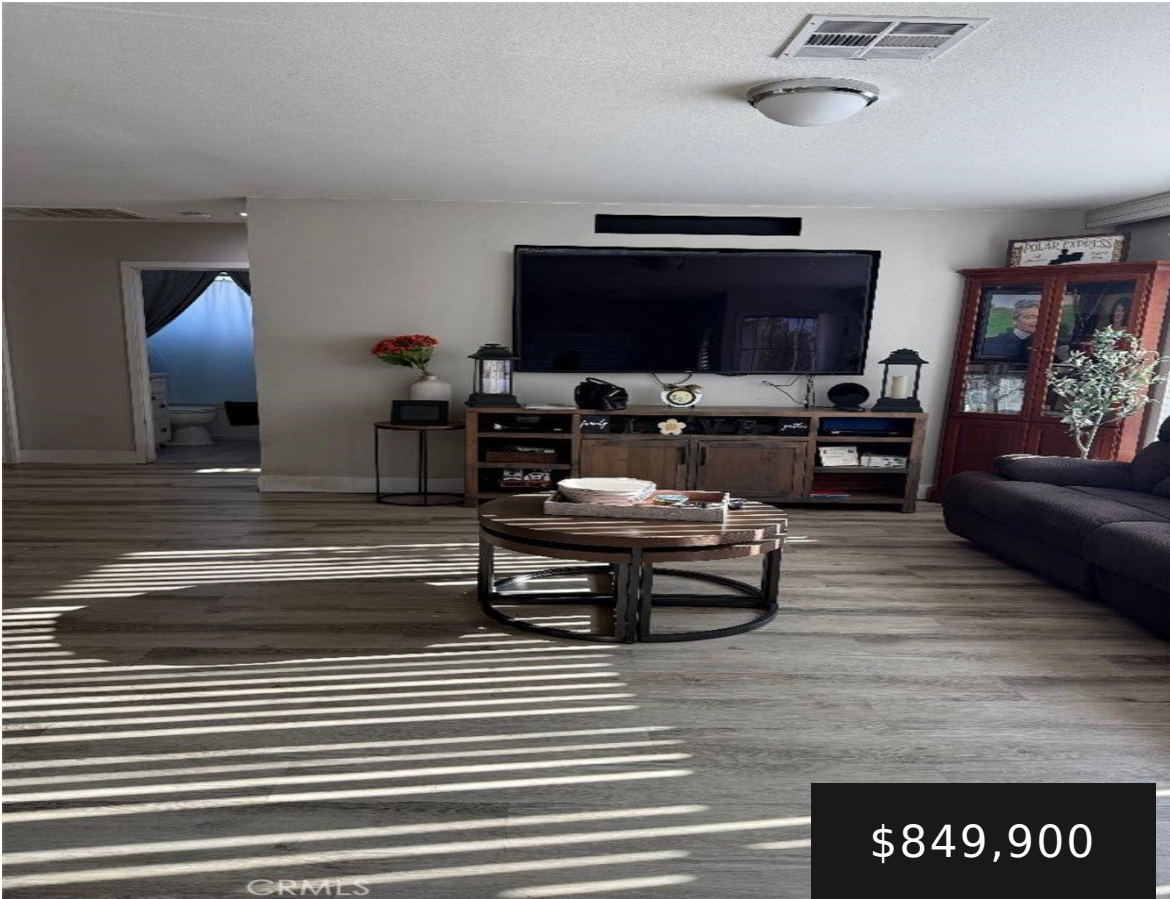


10258 JERSEY, SANTA FE SPRINGS, CA, US, 90670

<https://realtorjd.com>

10258 Jersey, Santa Fe Springs, CA, US, 90670



\$849,900

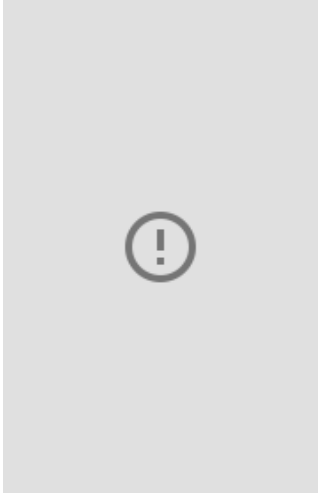


VERY NICE PROPERTY IN A VERY DESIRABLE AREA OF SANTA FE SPRINGS - MANY UPGRADES THROUGHOUT, OPEN FLOOR PLAN, LARGE [...]



Real Brokerage Technologies

- 3 beds
- 2 baths
- SingleFamilyResidence
- Residential
- Active
- 1596 sq ft



Basics

Category: Residential

Status: Active

Bathrooms: 2 baths

Lot size: 4925, 4925 sq ft

View: None

Type: SingleFamilyResidence

Bedrooms: 3 beds

Area: 1596 sq ft

Year built: 1951

County: Los Angeles

Building Details

Structure Type: House

Lot Features: BackYard,Yard

Common Walls: NoCommonWalls

Garage Spaces: 2

Other Structures: Storage

Water Source: Public

Sewer: PublicSewer

Fencing: Block,Vinyl

Levels: One

Amenities & Features

Pool Features: None

Spa Features: None

Roof: Composition

Cooling: CentralAir

Heating: Central

Laundry Features:
LaundryRoom

Parking Features: DoorMulti, Driveway, Garage

Parking Total: 2

Window Features: DoublePaneWindows,Screens

Fireplace Features: None

Interior Features: QuartzCounters, SeeRemarks,
AllBedroomsDown

Nearby Schools



Middle Or Junior School: Lake Center

Elementary School: Lakeview

High School: Santa Fe

High School District: Whittier Union High

Agent info

Agent name: Nancy Romo

Agent MLS: RROMONAN

Agent email: nancyromo7@aol.com

Agent officephone: 855-450-0442

Miscellaneous

List Office Name: Real Brokerage Technologies **Listing Terms:** Conventional

Common Interest: None

Community Features: StreetLights,Sidewalks

Attribution Contact: 562-477-5167

