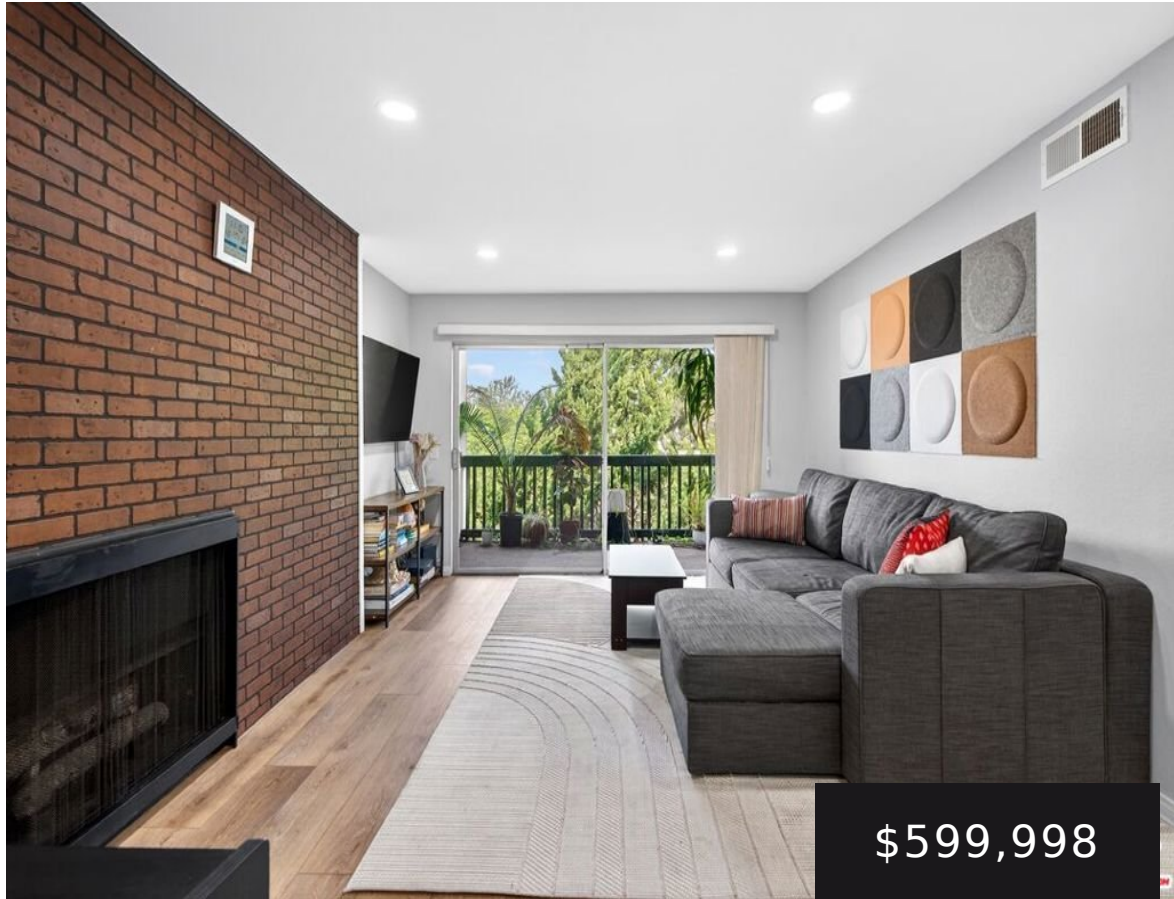


1307 RAINTREE CIRCLE, CULVER CITY, CA, US, 90230

<https://realtorjd.com>

1307 Raintree Circle, Culver City, CA, US, 90230

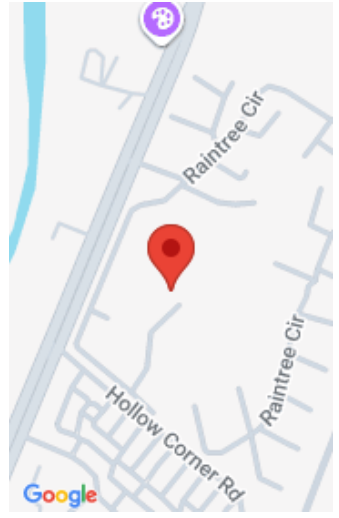


Top-floor and quietly tucked within Culver City's sought-after Raintree community, 1307 Raintree pairs natural light, tree-filled outlooks, and a calm, [...]



Revel Real Estate

- 1 bed
- 1 bath
- Condominium
- Residential
- Active
- 740 sq ft



Basics

Category: Residential

Status: Active

Bathrooms: 1 bath

Lot size: 296957, 296957 sq ft

Zoning: CCPD*

Type: Condominium

Bedrooms: 1 bed

Area: 740 sq ft

Year built: 1972

County: Los Angeles

Building Details

Common Walls: OneCommonWall

Levels: One

Amenities & Features

Pool Features: Community, Association

Security Features: GatedWithGuard, TwentyFourHourSecurity

Association Amenities:

ControlledAccess, Gas, MaintenanceGrounds, Pool, Sauna, Trash, CableTv, Utilities, Water

Fireplace Features: Gas

Heating: Central

Appliances: Refrigerator

Parking Features:
Garage,
Tandem

Parking Total: 2

Cooling:
CentralAir

Furnished:
Unfurnished

Laundry Features:
CommonArea

Expenses, Fees & Taxes

Association Fee: \$591.71



Agent info

Agent name: Tyler Drinkwater

Agent MLS: CLW-C134552

Agent email: tyler@revelrealestate.com **Agent officephone:** 424-239-7177

Agent direct phone: 617-818-0098

Miscellaneous

Association Fee Frequency: Monthly **List Office Name:** Revel Real Estate

Community Features: Pool

