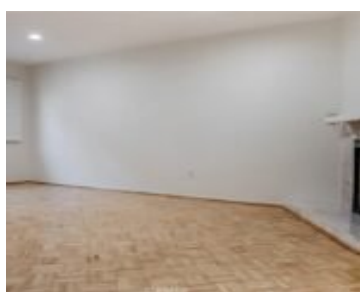
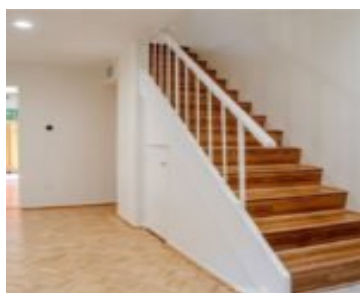
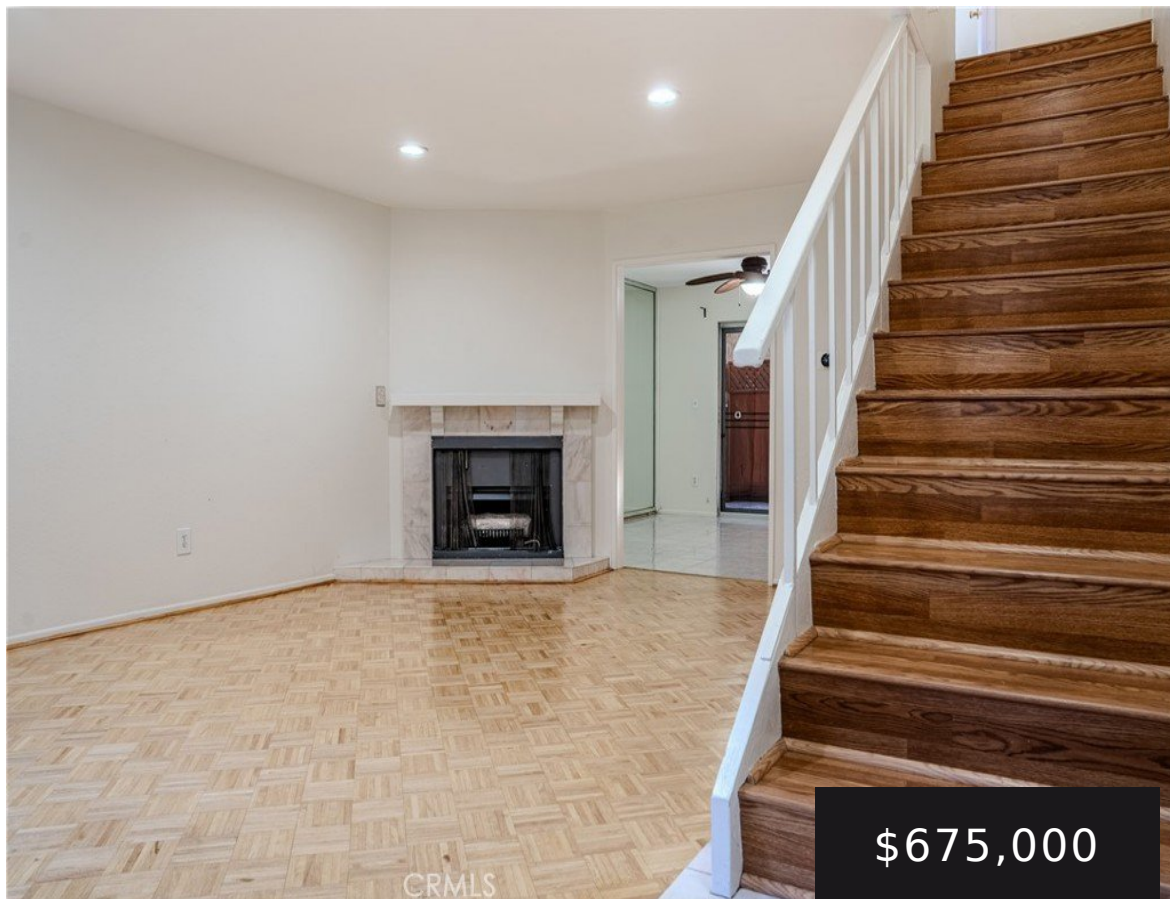


13112 MOORPARK 2, SHERMAN OAKS, CA, US, 91423

<https://realtorjd.com>

13112 Moorpark 2,
Sherman Oaks, CA,
US, 91423

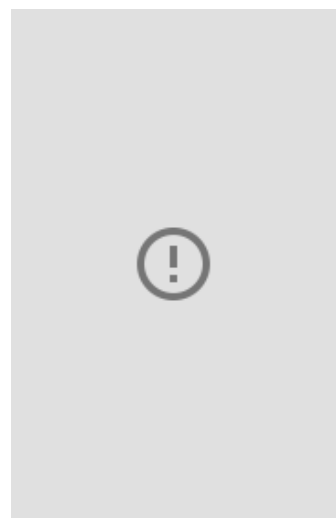


A perfect starter home, this 2bd 2.5ba is spacious and inviting. Decorative fireplace in the living room, and upgraded appliances [...]



Equity Union

- 2 beds
- 3 baths
- Townhouse
- Residential
- Active
- 1192 sq ft



Basics

Category: Residential

Status: Active

Bathrooms: 3 baths

Lot size: 7356, 7356 sq ft

View: None

Type: Townhouse

Bedrooms: 2 beds

Area: 1192 sq ft

Year built: 1974

County: Los Angeles

Building Details

Structure Type: MultiFamily

Sewer: PublicSewer

Garage Spaces: 2

Floor covering: Vinyl

Water Source: Public

Common Walls: TwoCommonWallsOrMore

Levels: Two

Amenities & Features

Pool Features: None

Association Amenities: Water

Fireplace Features: LivingRoom

Interior Features: AllBedroomsUp

Appliances: GasOven

Parking Total: 2

Cooling: CentralAir

Heating: Central,Fireplaces

Laundry Features: InKitchen

Nearby Schools

High School District: Los Angeles Unified

Expenses, Fees & Taxes



Association Fee: \$250

Agent info

Agent name: David Beirne

Agent email: david.beirne@equityunion.com

Agent MLS: SR207072624

Agent officephone: 818-989-2000

Miscellaneous

Association Fee Frequency: Monthly

Listing Terms:

Cash,CashToExistingLoan,CashToNewLoan,Exchange1031,FHA

Community Features: Gutters,Suburban

List Office Name:
Equity Union

Common Interest:
Condominium

**Attribution
Contact:**
917-514-6783

