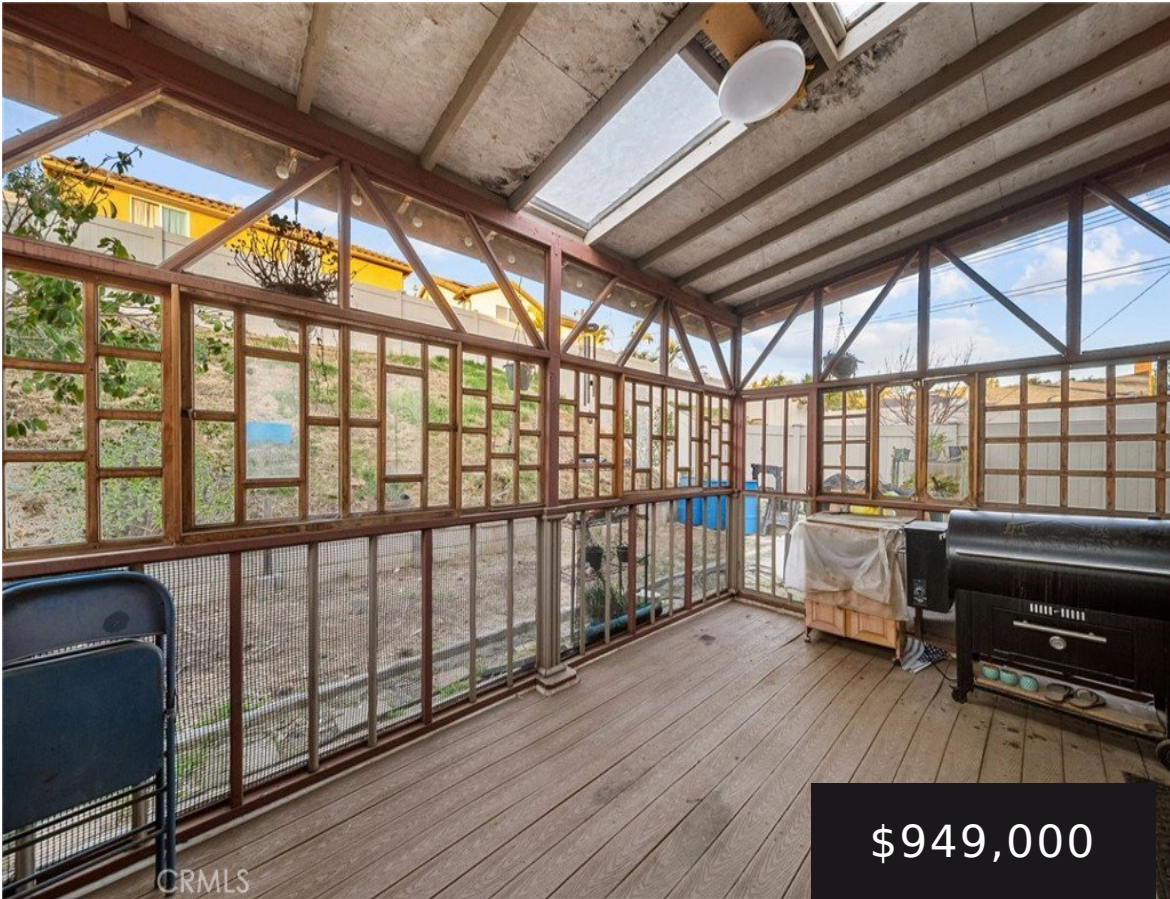


13232 WHEELER, SYLMAR, CA, US, 91342

https://realtorjd.com

13232 Wheeler,
Sylmar, CA, US,
91342



\$949,000



Welcome to 13232 Wheeler Ave, Sylmar — a beautifully maintained 4-bedroom, 3-bathroom home offering 2,647 sqft of spacious living, built [...]



Luxury Collective

- 4 beds
- 3 baths
- SingleFamilyResidence
- Residential
- Active
- 2741 sq ft



Basics

Category: Residential

Status: Active

Bathrooms: 3 baths

Lot size: 6384, 6384 sq ft

View: Mountains

Type: SingleFamilyResidence

Bedrooms: 4 beds

Area: 2741 sq ft

Year built: 2012

County: Los Angeles

Building Details

Structure Type: House

Lot Features: ZeroToOneUnitAcre

Common Walls: NoCommonWalls

Levels: Two

Water Source: Public

Sewer: PublicSewer

Garage Spaces: 2

Amenities & Features

Pool Features: None

Cooling: CentralAir

Heating: Solar

Interior Features: AllBedroomsUp, Loft

Parking Total: 2

Fireplace Features: None

Horse Amenities: RidingTrail

Laundry Features: InGarage

Nearby Schools

High School District: Los Angeles Unified

Expenses, Fees & Taxes

Association Fee: \$95



Agent info

Agent name: Ralff Vizconde

Agent MLS: SR207063943

Agent email: ralff@luxurycollectivere.com **Agent officephone:** 424-395-4841

Agent direct phone: 818-941-5841

Miscellaneous

Association Fee Frequency: Monthly

List Office Name:
Luxury Collective

Listing Terms:
Cash,Conventional,CalVetLoan,FHA,FannieMae,VaLoan

Common Interest:
None

Community Features: Curbs,Golf,HorseTrails,Sidewalks

Attribution Contact:
818-941-5841

