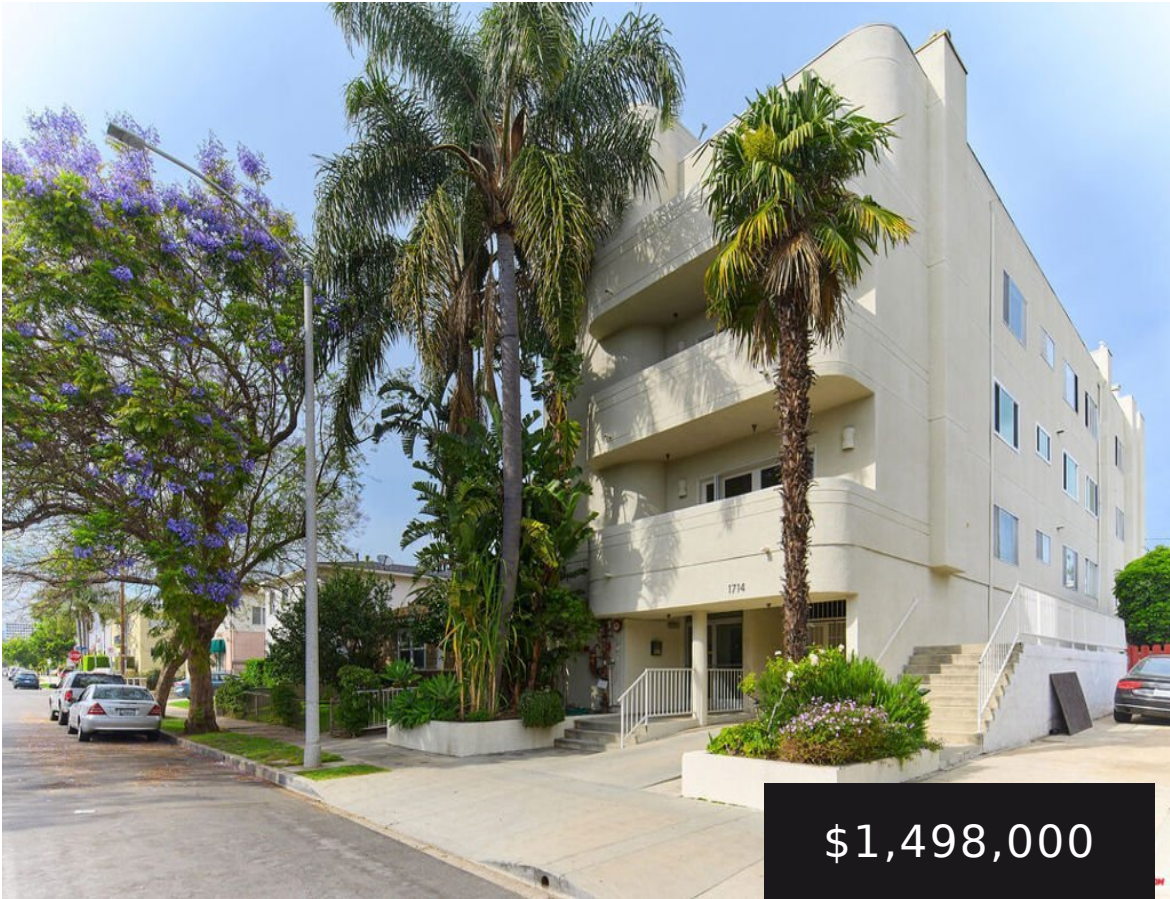


1714 BARRY AVENUE D, LOS ANGELES, CA, US, 90025

<https://realtorjd.com>

1714 Barry Avenue
D, Los Angeles, CA,
US, 90025

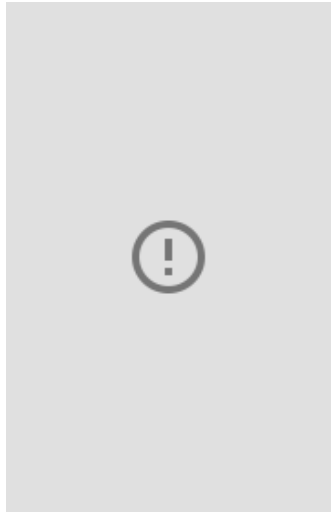


****OFFER DEADLINE IS WEDNESDAY, APRIL 22 AT 12PM**** Encompassing the entire top floor of a boutique building in the heart [...]



Pardee Properties

- 3 beds
- 3 baths
- Condominium
- Residential
- Active
- 2163 sq ft



Basics

Category: Residential

Status: Active

Bathrooms: 3 baths

Lot size: 5502, 5502 sq ft

Property Condition: UpdatedRemodeled

Zoning: LAR3

Type: Condominium

Bedrooms: 3 beds

Area: 2163 sq ft

Year built: 1991

View: CityLights,Ocean

County: Los Angeles

Building Details

Architectural Style: Contemporary

Levels: One

Common Walls: OneCommonWall

Floor covering: Carpet, Stone

Amenities & Features

Pool Features: None

Security Features: CarbonMonoxideDetectors, KeyCardEntry, SmokeDetectors

Parking Total: 2

Cooling: CentralAir

Furnished: Unfurnished

Interior Features: Balcony, SeparateFormalDiningRoom, HighCeilings, OpenFloorplan, WalkInClosets

Appliances:

Dishwasher,ElectricCooktop,ElectricOven,Microwave,Range,Refrigerator,Dryer,Washer

Parking Features:

Assigned,
ControlledEntrance,
Covered, Garage,
Gated,
CommunityStructure,
Tandem

Patio & Porch

Features: Rooftop

Association

Amenities:

ControlledAccess,Water

Fireplace Features:

LivingRoom

Heating: Central

Laundry Features:

Inside



Expenses, Fees & Taxes

Association Fee: \$750

Agent info

Agent name: Colleen Buerge

Agent MLS: CLW-X97957

Agent email: colleen@pardeeproperties.com **Agent direct phone:** 310-466-9558

Miscellaneous

Association Fee Frequency: Monthly **List Office Name:** Pardee Properties

Direction Faces: West

