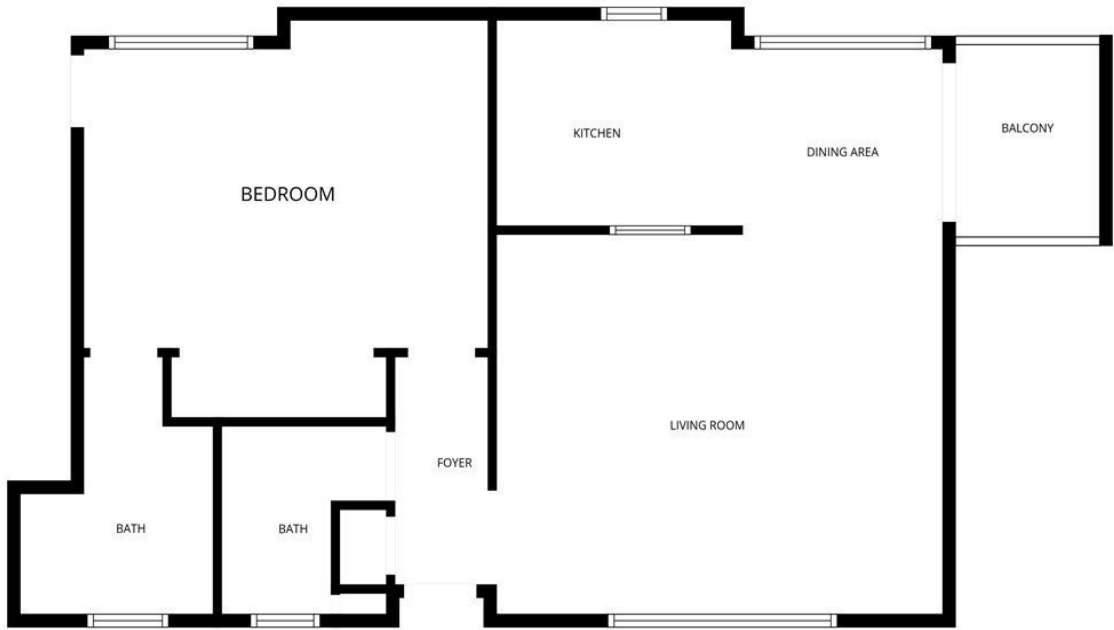


2015 E BROADWAY 305, LONG BEACH, CA, US, 90803

<https://realtorjd.com>

2015 E Broadway
305, Long Beach,
CA, US, 90803



\$449,000

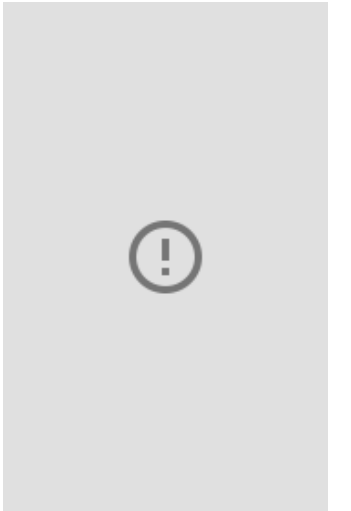
FLOOR PLAN CREATED BY CUBICASA APP. MEASUREMENTS DEEMED HIGHLY RELIABLE BUT NOT GUARANTEED.

Tucked into the heart of Bluff Heights, this oversized 1 bedroom, 1½ bath condo offers the kind of space and [...]



J2M, Inc

- 1 bed
- 2 baths
- Condominium
- Residential
- Active
- 824 sq ft



Basics

Category: Residential

Status: Active

Bathrooms: 2 baths

Lot size: 14890, 14890 sq ft

Property Condition: Turnkey

Subdivision Name: Belmont Heights (BH)

Type: Condominium

Bedrooms: 1 bed

Area: 824 sq ft

Year built: 1973

View: CityLights

County: Los Angeles

Building Details

Structure Type: MultiFamily

Sewer: PublicSewer

Garage Spaces: 1

Floor covering: Vinyl

Water Source: Public

Common Walls: TwoCommonWallsOrMore

Levels: One

Amenities & Features

Pool Features: None

Security Features: KeyCardEntry

Parking Total: 1

Cooling: WallWindowUnits

Fireplace Features: None

Interior Features: CrownMolding, GraniteCounters, RecessedLighting

Appliances:

Dishwasher,ElectricCooktop,ElectricOven,Refrigerator

Parking Features: Assigned, Underground, Gated, CommunityStructure

Spa Features: None

Association Amenities: RecreationRoom,Trash,Water

Door Features: SlidingDoors

Heating: SeeRemarks

Laundry Features: CommonArea



Nearby Schools

Middle Or Junior School: Jefferson

High School: Woodrow Wilson

Elementary School: Burbank

High School District: Long Beach Unified

Expenses, Fees & Taxes

Association Fee: \$457

Agent info

Agent name: David Ness

Agent email: dnesshomeloans@gmail.com

Agent MLS: OCNESDAVE

Agent officephone: 562-684-1871

Miscellaneous

Association Fee Frequency: Monthly

Listing Terms: Cash,CashToNewLoan,Conventional

Community Features: Curbs,StreetLights,Sidewalks

Attribution Contact: 562-221-4389

List Office Name: J2M, Inc

Common Interest: Condominium

Inclusions: oven, stove top, fridge, dishwasher

