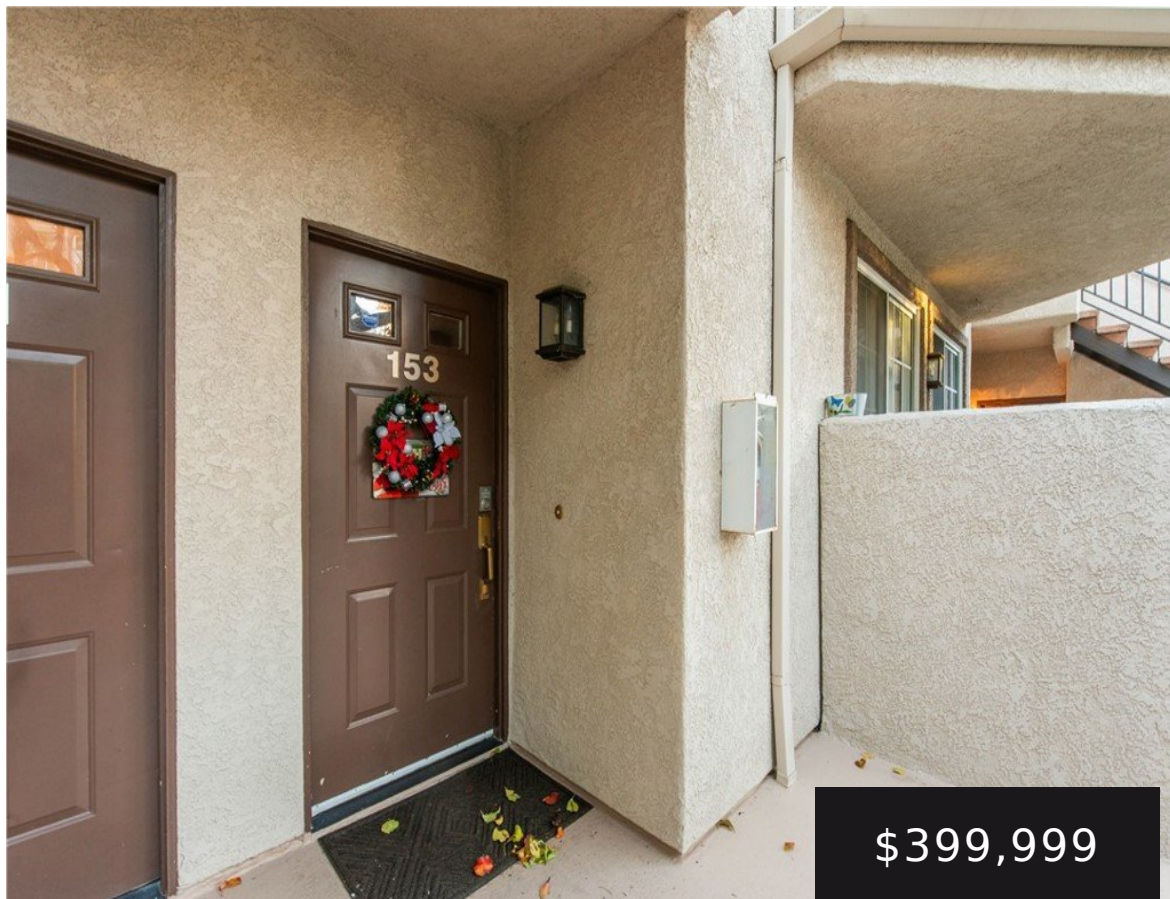


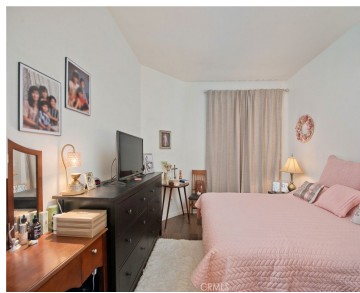
# 24125 DEL MONTE 153, VALENCIA, CA, US, 91355

<https://realtorjd.com>

24125 Del Monte  
153, Valencia, CA,  
US, 91355



**\$399,999**

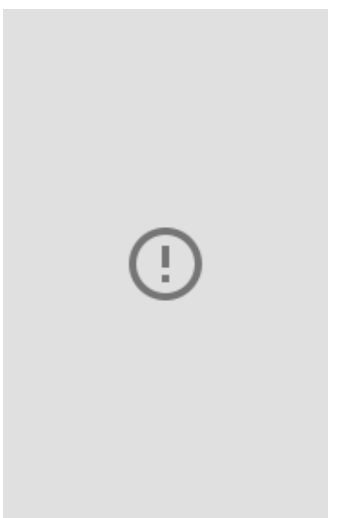


Welcome to Sienna Villas, a resort-style community ideally located in the heart of Valencia near McBean Parkway and Del Monte. [...]



LPT Realty, Inc

- 1 bed
- 1 bath
- Condominium
- Residential
- Active
- 693 sq ft



---

## Basics

**Category:** Residential

**Status:** Active

**Bathrooms:** 1 bath

**Lot size:** 842565, 842565 sq ft

**View:** Courtyard,TreesWoods

**County:** Los Angeles

**Type:** Condominium

**Bedrooms:** 1 bed

**Area:** 693 sq ft

**Year built:** 1989

**Subdivision Name:** Siena Villas (SNVL)

---

## Building Details

**Structure Type:** House

**Lot Features:** ZeroToOneUnitAcre

**Common Walls:** TwoCommonWallsOrMore

**Floor covering:** Laminate

**Water Source:** Public

**Sewer:** PublicSewer

**Levels:** Two

---

## Amenities & Features

**Pool Features:** Community, InGround, Association

**Security Features:** CarbonMonoxideDetectors, SmokeDetectors

**Association Amenities:** Pool,SpaHotTub

**Fireplace Features:** Decorative, Gas

**Interior Features:** CeilingFans, SeparateFormalDiningRoom, WalkInClosets

**Appliances:**

Dishwasher,GasRange,Microwave,Refrigerator,Dryer,Washer

**Parking Features:** Assigned, Garage, CommunityStructure, Tandem

**Spa Features:** Community,InGround

**Cooling:** CentralAir

**Heating:** Central

**Laundry Features:** Inside,LaundryCloset,Stacked

---

## Nearby Schools



**High School District:** William S. Hart Union

---

## Expenses, Fees & Taxes

**Association Fee:** \$392

---

## Agent info

**Agent name:** George Kpachavi

**Agent MLS:** F207056839

**Agent email:** george@kpachavirealestate.com

**Agent officephone:** 877-366-2213

---

## Miscellaneous

**Association Fee Frequency:** Monthly

**List Office Name:** LPT Realty, Inc

**Listing Terms:** Cash,Conventional

**Common Interest:** Condominium

**Community Features:** StreetLights,Pool

**Attribution Contact:** 310-525-0528

