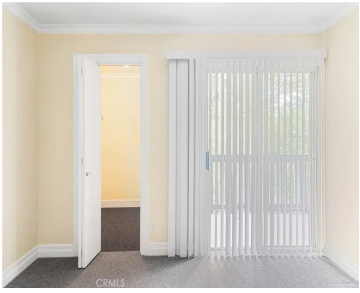


**3603 W HIDDEN LANE 317, ROLLING HILLS ESTATES,
CA, US, 90274**

<https://realtorjd.com>

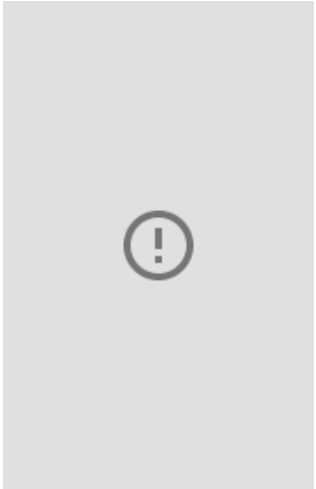
3603 W Hidden
Lane 317, Rolling
Hills Estates, CA,
US, 90274



Welcome to this inviting 1-bedroom, 1-bath condo in the sought-after The Estates community of Rolling Hills Estates. Situated on the [...]



- 1 bed
- 1 bath
- Condominium
- Residential
- Active
- 659 sq ft



Basics

Category: Residential

Status: Active

Bathrooms: 1 bath

Lot size: 433873, 433873 sq ft

View: TreesWoods

County: Los Angeles

Type: Condominium

Bedrooms: 1 bed

Area: 659 sq ft

Year built: 1973

Zoning: LCR3*

Building Details

Structure Type: House

Architectural Style: Contemporary

Sewer: PublicSewer

Garage Spaces: 2

Water Source: Public

Lot Features: Landscaped

Common Walls: TwoCommonWallsOrMore

Levels: One

Amenities & Features

Pool Features: Community, Heated, Association

Security Features: CarbonMonoxideDetectors, SmokeDetectors

Accessibility Features: AccessibleDoors

Association Amenities: OutdoorCookingArea,Barbecue,PicnicArea,Pool,Sauna,SpaHotTub

Cooling: None

Fireplace Features: None

Laundry Features: CommonArea

Parking Features: Underground

Spa Features: Association,Community

Parking Total: 2

Utilities: CableAvailable,ElectricityConnected,SewerConnected,WaterConnected

Door Features: SlidingDoors

Interior Features: Balcony, Elevator, Unfurnished, BedroomOnMainLevel

Appliances: Dishwasher,ElectricCooktop,ElectricOven,ElectricRange,Disposal,Refrigerator

Nearby Schools

High School District: Palos Verdes Peninsula Unified

Expenses, Fees & Taxes



Association Fee: \$501.74

Agent info

Agent name: Rebecca Thiedeman

Agent MLS: SBTHIEREB

Agent email: RebeccaThiedeman@gmail.com **Agent officephone:** 877-366-2213

Agent direct phone: 310-717-7277

Miscellaneous

Association Fee Frequency: Monthly

List Office Name: LPT
Realty

Listing Terms:

Cash,Conventional,FHA,FannieMae,FreddieMac,VaLoan

Common Interest:
Condominium

Community Features: Biking,Curbs,DogPark,Sidewalks,Pool

Attribution Contact:
310-717-7277

