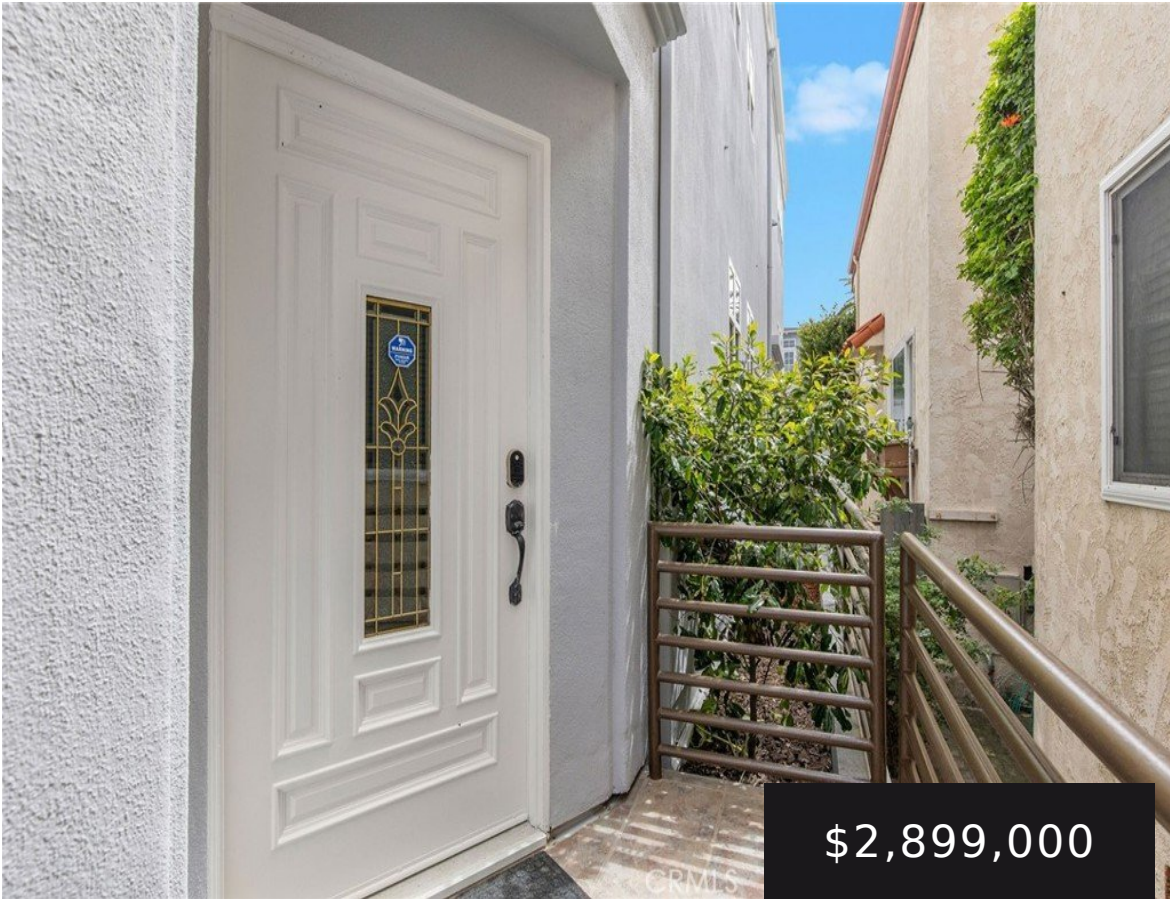


448 23RD PLACE, MANHATTAN BEACH, CA, US, 90266

<https://realtorjd.com>

448 23rd Place,
Manhattan Beach,
CA, US, 90266



\$2,899,000

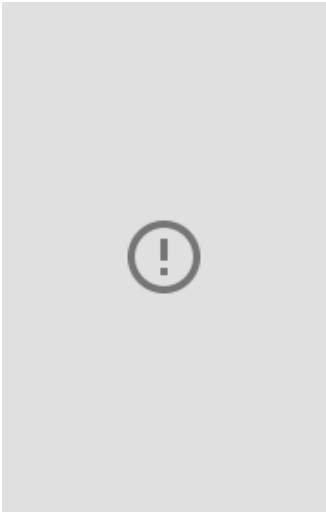


Set on a quiet street in the heart of the Gas Lamp section, this 3 bedroom, 3.5-bath townhome is a [...]



Compass

- 3 beds
- 4 baths
- Townhouse
- Residential
- Active
- 1837 sq ft



Basics

Category: Residential

Status: Active

Bathrooms: 4 baths

Lot size: 2715, 2715 sq ft

Property Condition: UpdatedRemodeled

County: Los Angeles

Type: Townhouse

Bedrooms: 3 beds

Area: 1837 sq ft

Year built: 2000

View: CityLights,Neighborhood

Building Details

Structure Type: House

Architectural Style: Contemporary

Sewer: PublicSewer

Foundation Details: Slab

Levels: ThreeOrMore

Water Source: Public

Lot Features: NearPark

Common Walls: OneCommonWall

Garage Spaces: 2

Floor covering: Carpet, Wood

Amenities & Features

Pool Features: None

Patio & Porch Features: Deck

Accessibility Features: None

Utilities:

ElectricityConnected,NaturalGasConnected,SewerConnected,WaterConnected

Cooling: CentralAir,HeatPump

Heating: Central

Laundry Features: Inside,LaundryRoom,Stacked

Parking Features: Concrete, Carport, DoorMulti, DirectAccess, Driveway, GarageFacesFront, Garage, Private, SideBySide, Storage

Spa Features: None

Parking Total: 3

Window Features: Shutters

Fireplace Features: Gas, LivingRoom

Interior Features: BuiltInFeatures, Balcony, Dumbwaiter, GraniteCounters, Storage, PrimarySuite, WalkInClosets

Appliances:

DoubleOven,Dishwasher,ElectricOven,Freezer,Disposal,GasRange,IceMaker,RangeHood,VentedExhaustFan,WaterToRefrigerator,Dryer,Washer

Nearby Schools

Middle Or Junior School: Manhattan Beach

High School: Mira Costa

Elementary School: Grand View

High School District: Manhattan Unified

Agent info



Agent name: Rob Depaoli

Agent MLS: SBDEPARO

Agent email: rob.depaoli@compass.com

Agent officephone: 310-362-0596

Agent direct phone: 310-546-7611

Miscellaneous

List Office Name: Compass

Listing Terms: Submit

Common Interest: Condominium

Community Features: Biking, Curbs, Sidewalks, Park

Direction Faces: North

Attribution Contact: 310-896-5343

