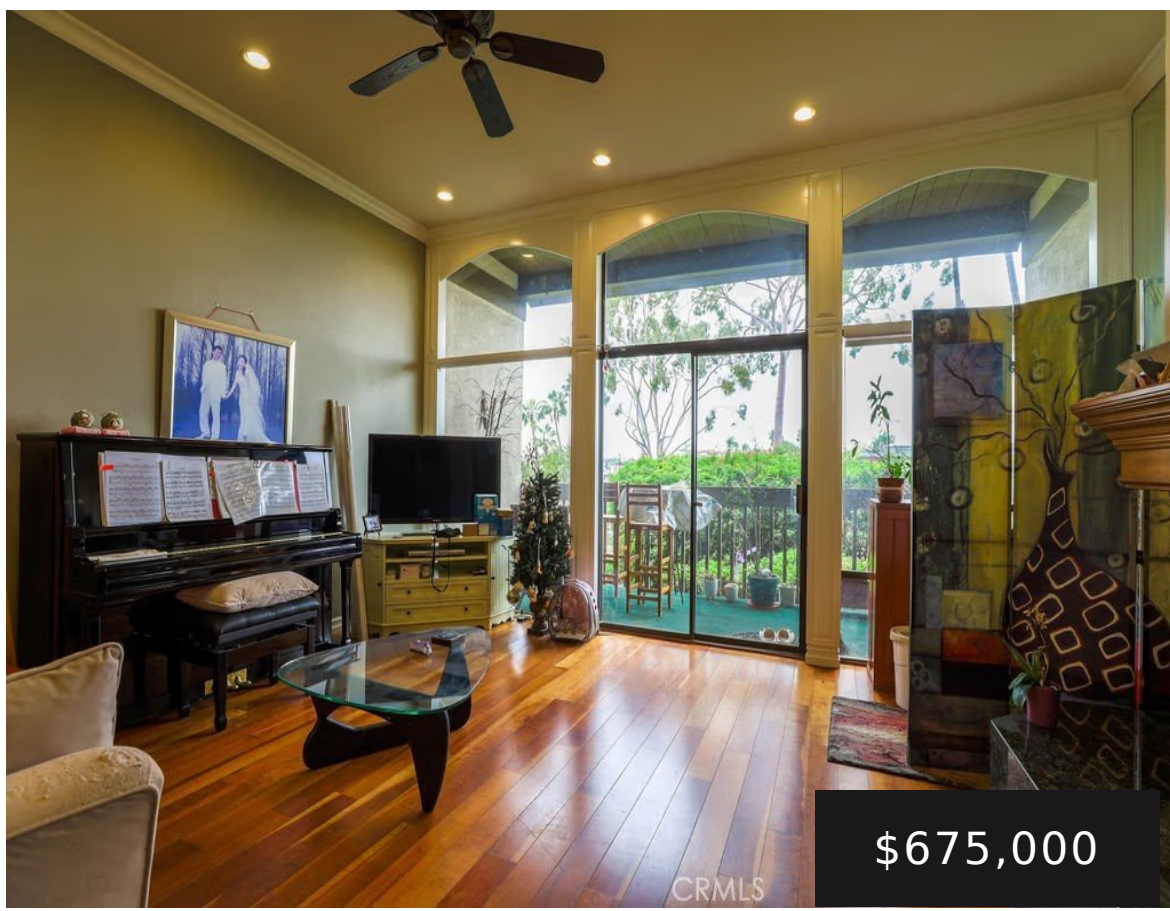


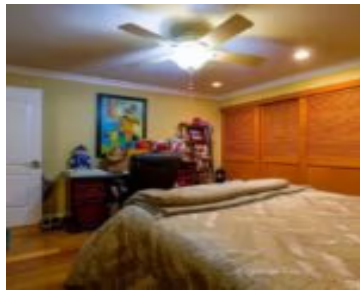
5103 MARINA PACIFICA DRIVE SOUTH KEY# 20, LONG BEACH, CA, US, 90803

<https://realtorjd.com>

5103 Marina
Pacifica Drive South
Key# 20, Long
Beach, CA, US,
90803



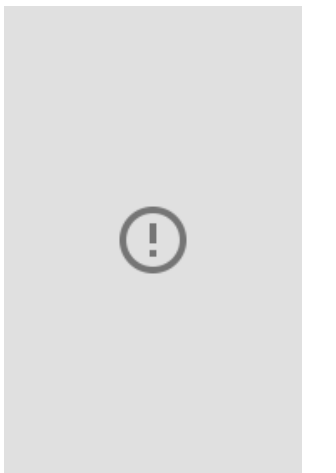
\$675,000



KEY #20 - Beautifully upgraded unit located in the South of Marina's last building with unobstructed greenbelt and marina views. [...]



- 1 bed
- 1 bath
- Condominium
- Residential
- Active
- 873 sq ft



Basics

Category: Residential

Type: Condominium

Status: Active

Bedrooms: 1 bed

Bathrooms: 1 bath

Area: 873 sq ft

Lot size: 979084, 979084 sq ft

Year built: 1974

View: Marina

Subdivision Name: Belmont Shore Condos (BSC)

County: Los Angeles

Building Details

Structure Type: House

Water Source: Public

Sewer: PublicSewer

Common Walls: TwoCommonWallsOrMore

Garage Spaces: 1

Levels: One

Amenities & Features

Pool Features: Association

Parking Features: Assigned

Security Features: GatedWithAttendant,
TwentyFourHourSecurity

Patio & Porch Features:
Patio

Spa Features: Association

Parking Total: 1

Association Amenities: Pool,SpaHotTub

Cooling: CentralAir

Fireplace Features: FamilyRoom

Heating: ForcedAir

Interior Features: AllBedroomsDown

Laundry Features: Inside

Appliances: Dishwasher,ElectricRange

Nearby Schools

Middle Or Junior School: Rogers

Elementary School: Naples

High School: Wilson

High School District: Long Beach Unified



Expenses, Fees & Taxes

Association Fee: \$794

Agent info

Agent name: Sonia Chopra

Agent MLS: OCCHOPSON

Agent email: soniachopra@ehomesteam.com **Agent officephone:** 909-224-9932

Agent direct phone: 9143091569

Miscellaneous

Association Fee Frequency: Monthly

List Office Name: Ehomes

Listing Terms: Cash,CashToNewLoan

Common Interest: Condominium

Community Features: StreetLights,Sidewalks,Marina **Inclusions:** Washer & dryer

Attribution Contact: 914-309-1569

