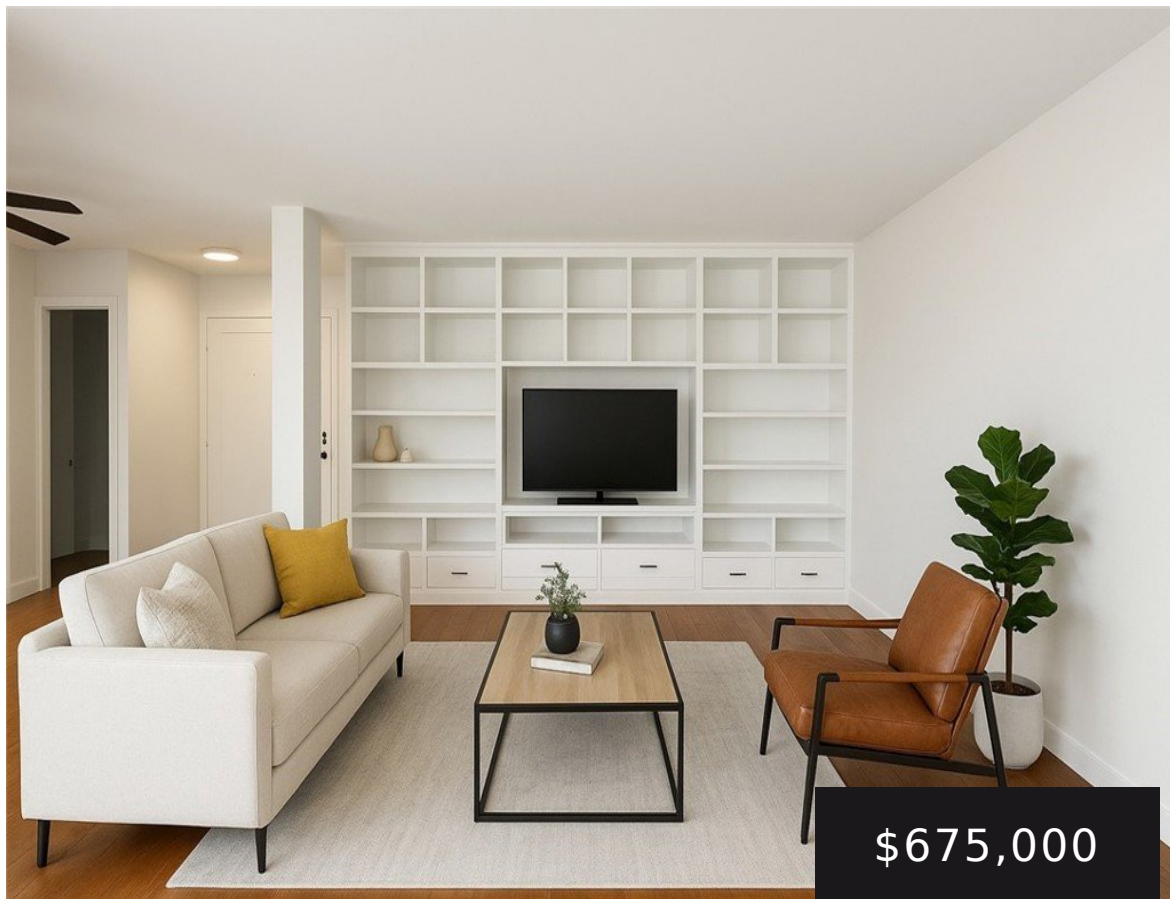


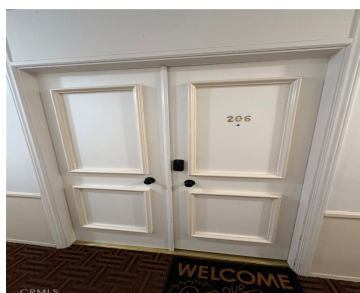
5625 SUMNER 206, CULVER CITY, CA, US, 90230

<https://realtorjd.com>

5625 Sumner 206,
Culver City, CA, US,
90230



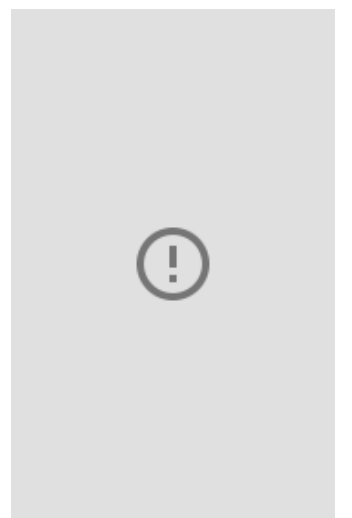
\$675,000



Experience luxury living at an incredible price per square foot! This beautifully renovated 2-bedroom, 2-bath condo with a den combines [...]



- 2 beds
- 2 baths
- Condominium
- Residential
- Active
- 1225 sq ft



Basics

Category: Residential

Status: Active

Bathrooms: 2 baths

Lot size: 28247, 28247 sq ft

View: Neighborhood

Type: Condominium

Bedrooms: 2 beds

Area: 1225 sq ft

Year built: 1967

County: Los Angeles

Building Details

Structure Type: MultiFamily

Sewer: PublicSewer

Garage Spaces: 2

Water Source: Public

Common Walls: OneCommonWall

Levels: One

Amenities & Features

Pool Features: Association

Security Features: SecuritySystem

Association Amenities: ControlledAccess,Pool,SpaHotTub

Fireplace Features: None

Interior Features: AllBedroomsDown

Appliances: Dishwasher,Microwave

Parking Features: Assigned

Parking Total: 4

Cooling: None

Heating: Radiant

Laundry Features: CommonArea

Nearby Schools

High School District: Culver City Unified

Expenses, Fees & Taxes



Association Fee: \$500

Agent info

Agent name: Suraya Nathie

Agent email: surayasells@kw.com

Agent direct phone: 562-481-5711

Agent MLS: DWNATSUR

Agent officephone: 310-432-6400

Miscellaneous

Association Fee Frequency: Monthly **List Office Name:** Keller Williams Beverly Hills

Listing Terms: Cash,Conventional

Common Interest: Condominium

Community Features: Hiking

Attribution Contact: 562-481-5711

