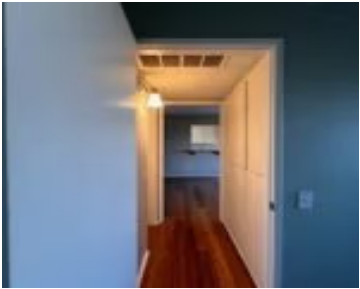
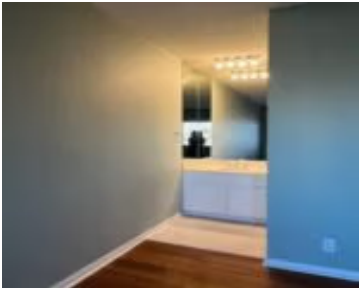


622 S BARRINGTON 302, LOS ANGELES, CA, US, 90049

<https://realtorjd.com>

622 S Barrington
302, Los Angeles,
CA, US, 90049

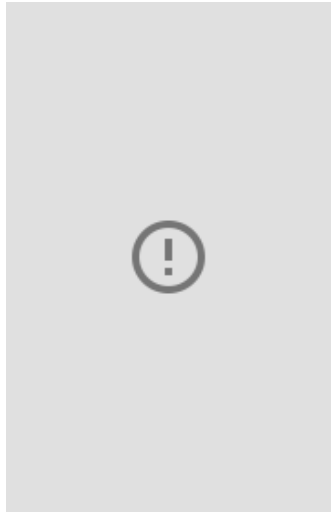


PRICE IMPROVEMENT: LUXURY LIVING IN THE HEART OF BRENTWOOD Seize the opportunity to own in one of LA's most sought-after [...]



Real Broker

- 1 bed
- 2 baths
- Condominium
- Residential
- Active
- 745 sq ft



Basics

Category: Residential

Status: Active

Bathrooms: 2 baths

Lot size: 34001, 34001 sq ft

View: CityLights,TreesWoods

Type: Condominium

Bedrooms: 1 bed

Area: 745 sq ft

Year built: 1972

County: Los Angeles

Building Details

Structure Type: MultiFamily

Sewer: Unknown

Garage Spaces: 1

Water Source: Public

Common Walls: OneCommonWall,EndUnit

Levels: One

Amenities & Features

Pool Features: Community, Association

Association Amenities: Pool,Sauna,SpaHotTub

Fireplace Features: None

Interior Features: AllBedroomsDown

Appliances: Dishwasher,Refrigerator

Parking Total: 1

Cooling: CentralAir

Heating: ForcedAir

Laundry Features: CommonArea

Nearby Schools

High School District: Los Angeles Unified

Expenses, Fees & Taxes

Association Fee: \$495



Agent info

Agent name: Emanuela Gentile

Agent email: ella@impactprop.com

Agent MLS: PWGENEMA

Agent officephone: 714-660-2122

Miscellaneous

Association Fee Frequency: Monthly

Listing Terms: Cash,Conventional,FHA

Community Features: Curbs,Sidewalks,Pool

List Office Name: Real Broker

Common Interest: Condominium

Attribution Contact: ella@impactprop.com

