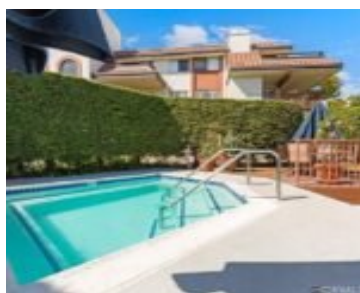
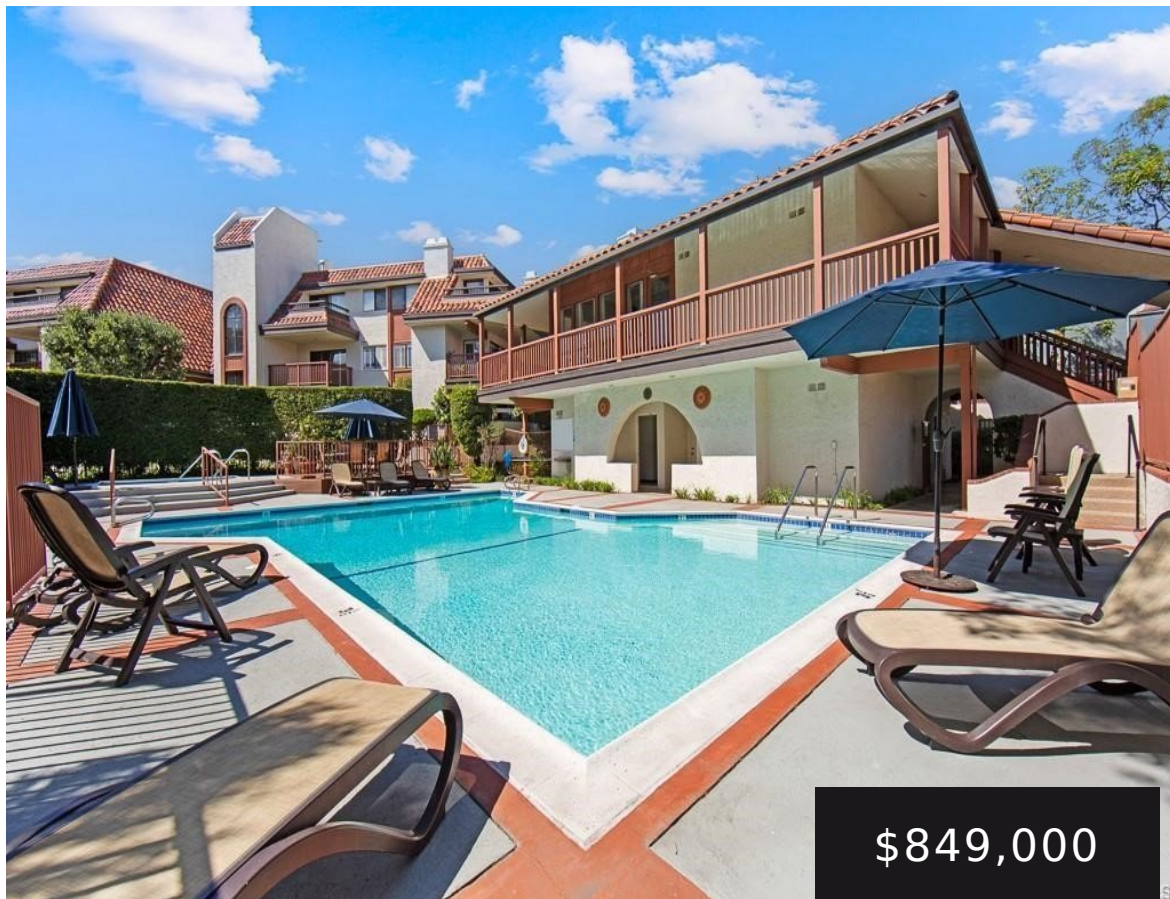


# 6225 RIVIERA CIRCLE, LONG BEACH, CA, US, 90815

<https://realtorjd.com>

6225 Riviera Circle,  
Long Beach, CA,  
US, 90815

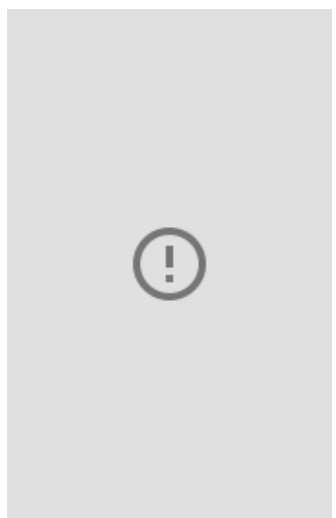


Tucked within a resort-style community called "BIXBY RIVIERA", this beautifully situated SINGLE STORY-END UNIT townhome offers a peaceful PARK-LIKE setting [...]



Coldwell Banker Realty

- 2 beds
- 2 baths
- Townhouse
- Residential
- Active
- 1587 sq ft



---

## Basics

**Category:** Residential

**Type:** Townhouse

**Status:** Active

**Bedrooms:** 2 beds

**Bathrooms:** 2 baths

**Area:** 1587 sq ft

**Lot size:** 170475, 170475 sq ft

**Year built:** 1981

**View:** ParkGreenbelt,TreesWoods

**Subdivision Name:** Bixby Riviera (BBR)

**County:** Los Angeles

---

## Building Details

**Structure Type:** House

**Water Source:** Public

**Architectural Style:** Traditional

**Sewer:** PublicSewer

**Common Walls:** OneCommonWall

**Garage Spaces:** 2

**Levels:** One

**Builder Name:** S&S

**Floor covering:** Carpet, Laminate, Wood

---

## Amenities & Features

**Pool Features:** Association

**Parking Features:** DirectAccess, DoorSingle, Garage, GarageFacesRear

**Security Features:**

CarbonMonoxideDetectors,  
GatedWithGuard,  
TwentyFourHourSecurity,  
SmokeDetectors

**Patio & Porch Features:** Concrete

**Spa Features:** Association

**Parking Total:** 2

**Roof:** Tile

**Association Amenities:**

Clubhouse,FitnessCenter,Pickleball,Pool,PetRestrictions,Guard,Sauna,SpaHotTub,Security,Trash,Water

**Window Features:**

PlantationShutters

**Cooling:** CentralAir

**Door Features:**

DoubleDoorEntry,SlidingDoors

**Fireplace Features:** GasStarter, LivingRoom

**Heating:** Central

**Interior Features:** BuiltInFeatures, CeilingFans, CrownMolding, SeparateFormalDiningRoom,  
EatInKitchen, Pantry, RecessedLighting, TrackLighting, AllBedroomsDown

**Laundry Features:**

Inside,LaundryRoom

**Appliances:**

BuiltInRange,Dishwasher,ElectricCooktop,Disposal,Microwave,Refrigerator,TrashCompactor,Dryer,Washer

---

## Nearby Schools



**High School District:** Long Beach Unified

---

## Expenses, Fees & Taxes

**Association Fee:** \$800

---

## Agent info

**Agent name:** Chris Italiano

**Agent email:** Chris@ItalianoHomes.com

**Agent MLS:** PWPCHRBITT

**Agent officephone:** 562-494-4600

---

## Miscellaneous

**Association Fee Frequency:** Monthly

**Listing Terms:** Cash,CashToNewLoan

**Community Features:**

Curbs,StormDrains,Sidewalks

**Attribution Contact:** 562-506-3603

**List Office Name:** Coldwell Banker Realty

**Common Interest:** PlannedDevelopment

**Inclusions:** REFRIGERATOR, WASHER,  
DRYER AND 1 MOUNTED TV

