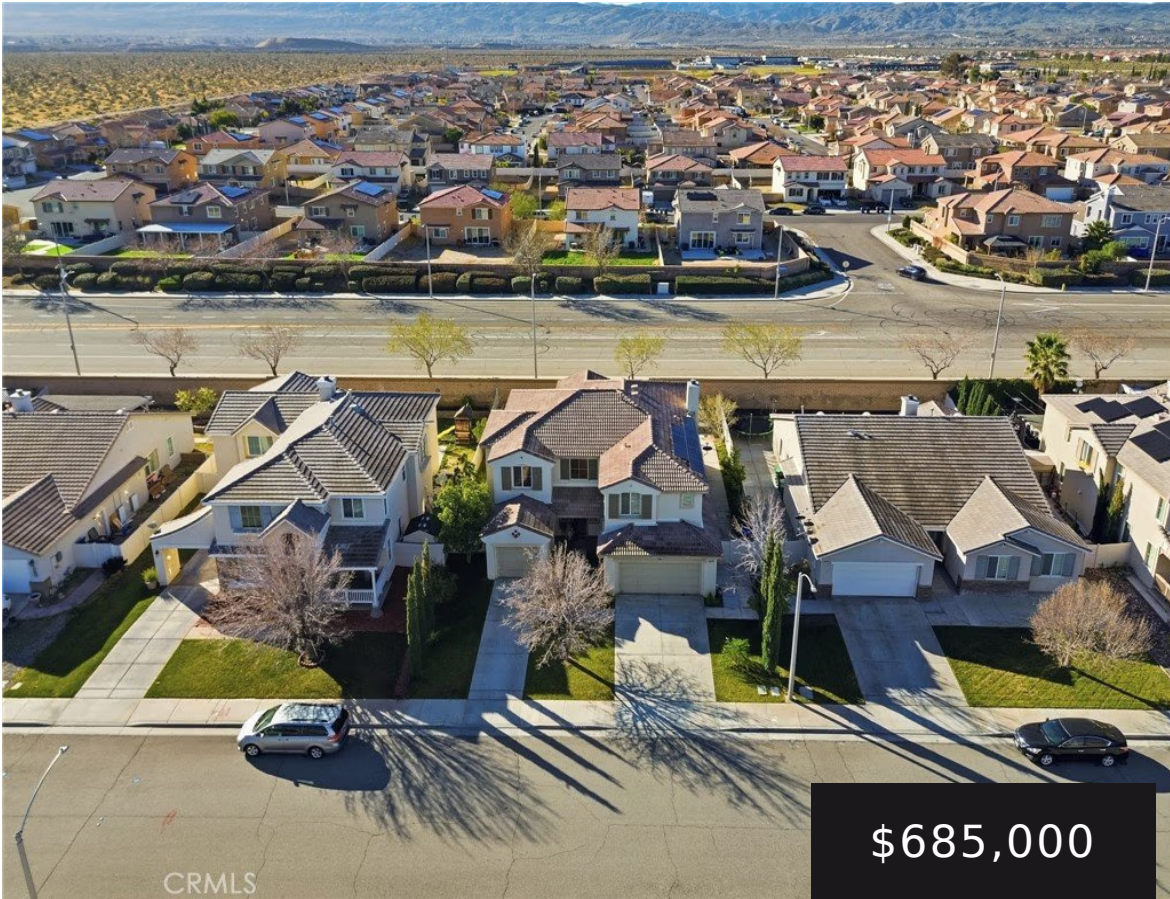


6864 BUCHET DRIVE, PALMDALE, CA, US, 93552

https://realtorjd.com

6864 Buchet Drive,
Palmdale, CA, US,
93552



\$685,000

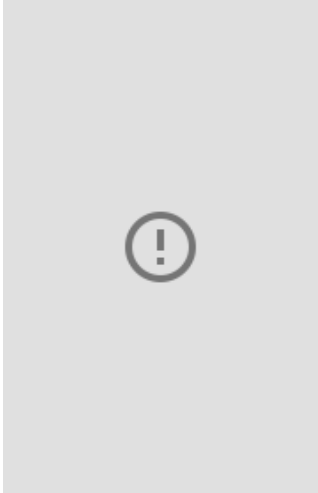
CRMLS

Step into this beautiful two-story home offering 5 bedrooms, 3 bathrooms, and 3,335 sq ft of spacious living. Inside, you'll [...]



Real Brokerage Technologies Inc

- 5 beds
- 3 baths
- SingleFamilyResidence
- Residential
- Active
- 3335 sq ft



Basics

Category: Residential

Status: Active

Bathrooms: 3 baths

Lot size: 7802, 7802 sq ft

Property Condition: UpdatedRemodeled,Turnkey

County: Los Angeles

Type: SingleFamilyResidence

Bedrooms: 5 beds

Area: 3335 sq ft

Year built: 2005

View: Neighborhood

Building Details

Structure Type: House

Water Source: Public

Architectural Style:

Traditional

Lot Features:

ZeroToOneUnitAcre,BackYard,DesertBack,FrontYard,Lawn,Landscaped,Level,Paved,SprinklerSystem,Yard

Sewer: PublicSewer

Common Walls: NoCommonWalls

Construction Materials:

Block,Glass,Concrete,Stucco

Fencing: Block

Garage Spaces: 3

Levels: Two

Floor covering: Carpet,

Laminate, Tile

Amenities & Features

Pool Features: Community, InGround, Association

Security Features: SecuritySystem, CarbonMonoxideDetectors, SmokeDetectors, SecurityLights

Spa Features: Community,Heated,InGround

Parking Total: 3

Association Amenities:

Management,PicnicArea,Pool,RecreationRoom,SpaHotTub

Window Features: Blinds,Drapes

Door Features: SlidingDoors

Exterior Features: Lighting

Heating: Central

Laundry Features:

WasherHookup,ElectricDryerHookup,GasDryerHookup,Inside,LaundryRoom

Parking Features: Concrete, DoorMulti, Driveway, ElectricVehicleChargingStations, GarageFacesFront, Garage, OneSpace

Patio & Porch Features: FrontPorch,Porch

Accessibility Features: Parking

Roof: Tile

Utilities:

ElectricityConnected,NaturalGasConnected,SewerConnected,WaterConnected

Cooling: CentralAir

Electric: ElectricityOnProperty,Standard

Fireplace Features: LivingRoom

Interior Features: CeilingFans, CathedralCeilings, SeparateFormalDiningRoom, EatInKitchen, HighCeilings, OpenFloorplan, StoneCounters, RecessedLighting, Storage, BedroomOnMainLevel

Appliances: Dishwasher,GasOven,GasRange,Microwave,WaterHeater

Nearby Schools



High School District: Antelope Valley Union

Expenses, Fees & Taxes

Association Fee: \$72

Agent info

Agent name: Sergio Rosales

Agent email: realtorvinnie@gmail.com

Agent MLS: SR207065335

Agent officephone: 805-636-1024

Miscellaneous

Association Fee Frequency: Monthly

Listing Terms: Cash,Conventional,FHA,VaLoan

Community Features:

Biking,Curbs,DogPark,Gutters,Hiking,Park,StormDrains,StreetLights,Suburban,Sidewalks,Pool

Inclusions: Stove, Microwave

List Office Name: Real Brokerage Technologies Inc

Common Interest: None

Exclusions: Refrigerator, Washer & Dryer

Attribution Contact: 818-590-3816

