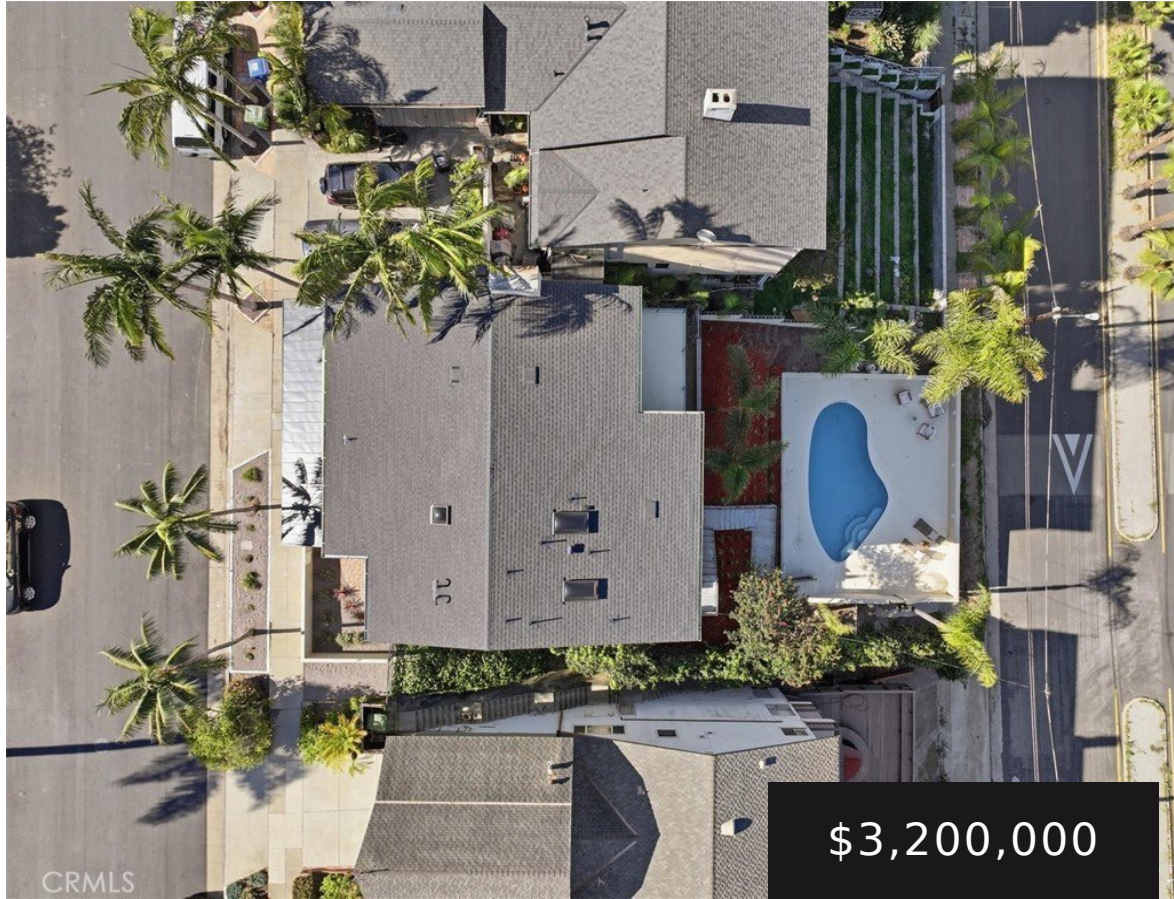


8140 CALABAR AVENUE, PLAYA DEL REY, CA, US, 90293

<https://realtorjd.com>

8140 calabar Avenue, Playa Del Rey, CA, US, 90293

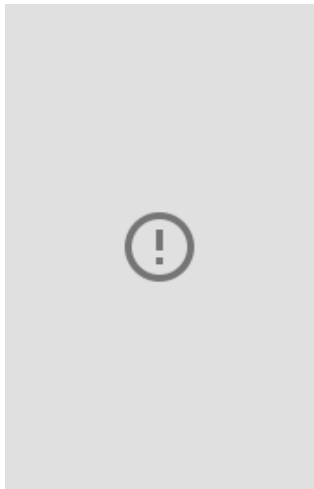


Welcome to Casa Calabar, a fully remodeled, move-in ready bluff home featuring 4 bedrooms, 3.5 bathrooms, an office, game room, [...]



DOMO Real Estate

- 4 beds
- 4 baths
- SingleFamilyResidence
- Residential
- Active
- 3346 sq ft



Basics

Category: Residential

Status: Active

Bathrooms: 4 baths

Lot size: 6046, 6046 sq ft

Property Condition:
Updated, Remodeled, Turnkey

County: Los Angeles

Type: Single Family Residence

Bedrooms: 4 beds

Area: 3346 sq ft

Year built: 1974

View:
Bay, Bluff, City Lights, Coastline, Harbor, Marina, Ocean, Pool

Building Details

Structure Type: House

Lot Features: Zero To One Unit Acre

Common Walls: No Common Walls

Fencing: Block

Garage Spaces: 2

Floor covering: Wood

Architectural Style: Spanish

Sewer: Public Sewer

Construction Materials: Stucco

Foundation Details: Block

Levels: Three Or More

Amenities & Features

Pool Features: Private

Security Features: Carbon Monoxide Detectors, Fire Detection System, Smoke Detectors

Spa Features: None

Parking Total: 2

Utilities:

Cable Available, Electricity Connected, Natural Gas Available, Phone Available, Sewer Connected

Cooling: Central Air, Dual, Energy Star Qualified Equipment

Fireplace Features: Dining Room, Family Room, Primary Bedroom

Interior Features: Beamed Ceilings, Breakfast Bar, Built In Features, Balcony, Cathedral Ceilings, Separate Formal Dining Room, Eat In Kitchen, Granite Counters, High Ceilings, Living Room Deck Attached, Open Floorplan, Stone Counters, Track Lighting, Bar, All Bedrooms Down, Bedroom On Main Level, Entrance Foyer, Jack And Jill Bath, Main Level Primary, Primary Suite, Walk In Closets

Appliances:

Six Burner Stove, Dishwasher, Electric Range, Gas Oven, Gas Range, Tankless Water Heater

Parking Features: Door Multi, Garage

Patio & Porch Features: Rear Porch, Concrete, Deck, Lanai, Porch

Accessibility Features: None

Roof: Metal, Shingle

Window Features:

Bay Windows, Double Pane Windows

Door Features: Double Door Entry

Heating: Central

Laundry Features: Laundry Closet



Nearby Schools

High School District: Los Angeles Unified

Agent info

Agent name: Eric Kredatus

Agent email: eric@erickredatus.com

Agent direct phone: 310-874-1465

Agent MLS: SBKREDERI

Agent officephone: 310-818-7403

Miscellaneous

List Office Name:

DOMO
Real
Estate

Listing Terms:

Cash,CashToExistingLoan,CashToNewLoan,Conventional,Contract,CalVetLoan,Exchange1031

Common Community Features: Curbs,Hiking,Sidewalks

Interest:
None

Direction Attribution Contact: 310-874-1465

Faces:
West

