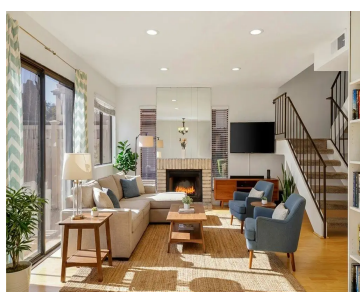
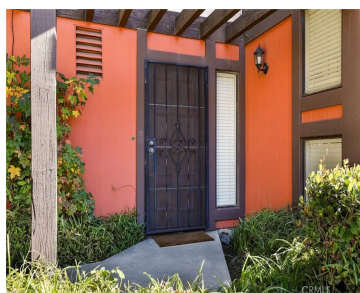


# 9910 ASPEN, SANTA FE SPRINGS, CA, US, 90670

<https://realtorjd.com>

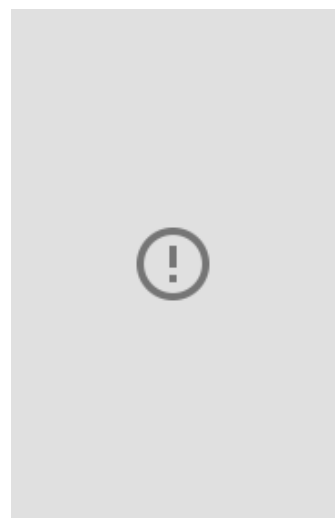
9910 Aspen, Santa Fe Springs, CA, US, 90670



Welcome to this exceptional corner townhome situated in the sought-after community of Aspen Meadows. From its spacious layout to its [...]



- 3 beds
- 3 baths
- Condominium
- Residential
- Active
- 1363 sq ft



---

## Basics

**Category:** Residential

**Status:** Active

**Bathrooms:** 3 baths

**Lot size:** 1508, 1508 sq ft

**View:** None

**Type:** Condominium

**Bedrooms:** 3 beds

**Area:** 1363 sq ft

**Year built:** 1979

**County:** Los Angeles

---

## Building Details

**Structure Type:** House

**Sewer:** PublicSewer

**Fencing:** Vinyl

**Levels:** Two

**Water Source:** Public

**Common Walls:** OneCommonWall

**Garage Spaces:** 2

**Floor covering:** Carpet, Laminate, Tile

---

## Amenities & Features

**Pool Features:** Community, InGround, Association

**Patio & Porch Features:** Concrete,Enclosed

**Parking Total:** 2

**Utilities:** CableAvailable

**Electric:** Standard

**Heating:**

Central,EnergyStarQualifiedEquipment,Fireplaces,NaturalGas

**Laundry Features:**

ElectricDryerHookup,GasDryerHookup,LaundryRoom

**Parking Features:** DoorSingle, Garage

**Spa Features:** Association,Community,InGround

**Association Amenities:** MaintenanceGrounds,Pool,PetsAllowed,SpaHotTub,Security,Trash

**Cooling:** CentralAir,Electric

**Fireplace Features:** LivingRoom

**Interior Features:** CeilingFans, HighCeilings, OpenFloorplan, StoneCounters, RecessedLighting, Unfurnished, Bar, AllBedroomsUp, Attic

**Appliances:**

Dishwasher,EnergyStarQualifiedAppliances,Disposal,GasOven,GasWaterHeater,IceMaker,Microwave,Refrigerator,WaterToRefrigerator,WaterHeater,Dryer,Washer

---

## Nearby Schools

**High School District:** Whittier Union High

---

## Expenses, Fees & Taxes

**Association Fee:** \$488.88



---

## Agent info

**Agent name:** Janice Sadler

**Agent MLS:** PSADLJAN

**Agent email:** janice.sadler@taulerhughes.com

**Agent officephone:** 619-248-6434

---

## Miscellaneous

**Association Fee Frequency:** Monthly

**List Office Name:** Real Broker

**Listing Terms:** CashToNewLoan

**Common Interest:** Condominium

**Community Features:** Sidewalks,Pool

**Attribution Contact:** 562-397-4685

